

Year 3/4 - Connecting Computers

1. What are the three main stages in how a digital device functions?

- (A) Hardware, software, firmware
- (B) On, off, standby
- (C) Keyboard, screen, mouse
- (D) Input, process, output



2. Which of the following is NOT typically considered an input for a digital device?

- (A) Keyboard
- (B) Touchscreen



- (C) Microphone



- (D) Speaker



3. What is one characteristic of a secure password?

- (A) Using your birth date
- (B) Using a common word
- (C) Using a combination of letters, numbers, and symbols
- (D) Using the same password for all accounts



4. Which of the following is an example of an output device?

- (A) Webcam
- (B) Keyboard



- (C) Monitor

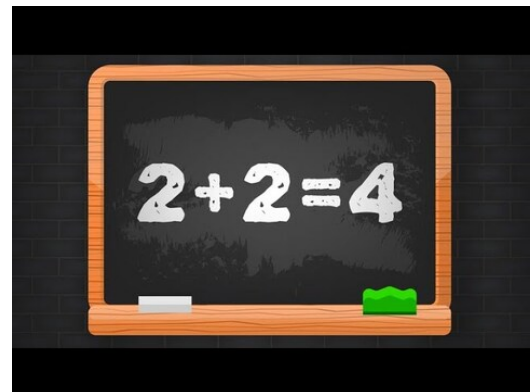


- (D) Mouse



5. In a simple process of adding two numbers using a calculator, what would be the correct order?

- (A) Process, Input, Output
- (B) Input, Output, Process
- (C) Output, Input, Process
- (D) Input, Process, Output



9. Which of these is NOT a common use for digital devices in everyday activities?

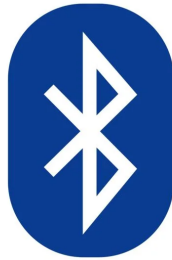
- (A) Communication
- (B) Entertainment
- (C) Information gathering
- (D) Manual labor

10. What allows tablets to connect to the internet without using wires?

- (A) HDMI
- (B) Wi-Fi



- (C) Bluetooth
- (D) USB



11.



In a school network, how does a message typically travel from one computer to another?

- (A) Through the power lines
- (B) Via satellite only
- (C) Through multiple connections and devices
- (D) Directly between computers

12.



What is the main purpose of a network switch in a computer network?

- (A) To provide wireless internet
- (B) To store all the data
- (C) To power on all the computers
- (D) To connect and direct data between multiple devices

13. Which device in a network is responsible for storing and providing access to shared resources?

- (A) Switch
- (B) Router



- (C) Server



- (D) Modem



14. What is the primary function of a wireless access point in a network?

- (A) To process data
- (B) To allow devices to connect wirelessly
- (C) To store files
- (D) To provide wired connections



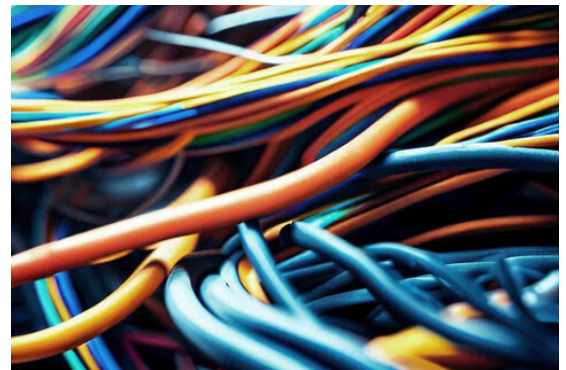
15. Which of the following is NOT typically a benefit of networking computers?

- (A) Elimination of all security risks
- (B) Reduced need for individual device storage
- (C) Improved communication between users
- (D) Shared access to files and programs



16. In a typical school network, how are most devices physically connected?

- (A) Wireless only
- (B) Bluetooth
- (C) Ethernet cables
- (D) Infrared



17.



Which of these devices would you NOT typically find as part of a school's network infrastructure?

- (A) Personal gaming consoles
- (B) Servers
- (C) Switches
- (D) Wireless access points

18. What is a key benefit of having a computer network in a school?

- (A) It makes individual computers run faster
- (B) It eliminates the need for teachers
- (C) It automatically completes students' homework
- (D) It allows for shared access to resources like printers and files

