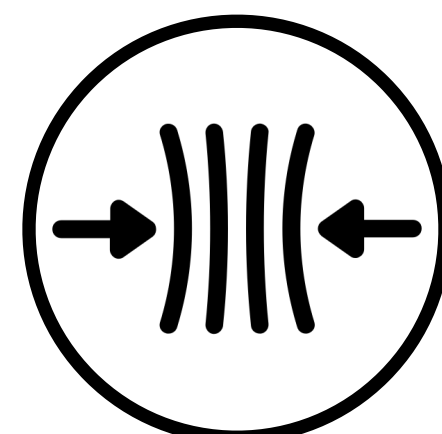


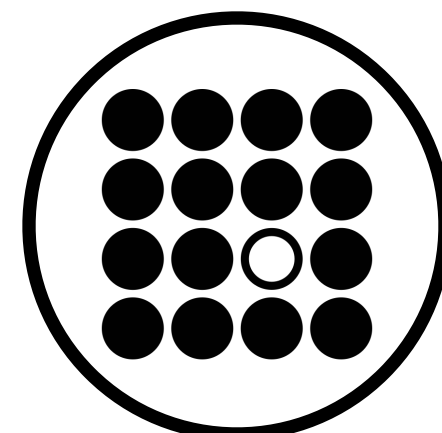
Curriculum Drivers

Resilience



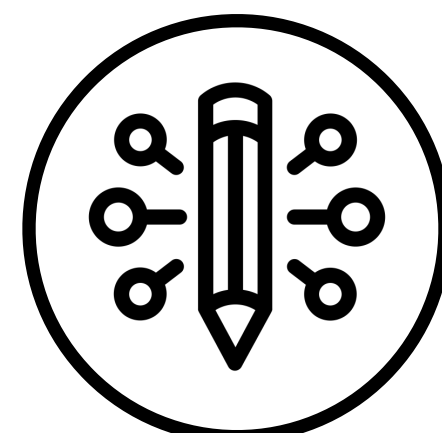
To empower children to be able to withstand or recover quickly from difficult conditions and to challenge themselves to reach their full potential, spiritually, intellectually, physically, creatively and socially.

Independence



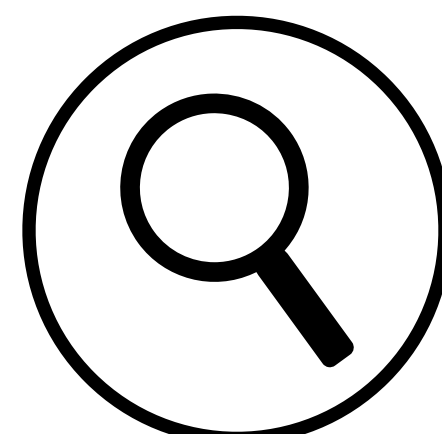
To enable children to take some responsibility for their own learning and become self-motivated to attain their goals without being overly reliant on others.

Creativity



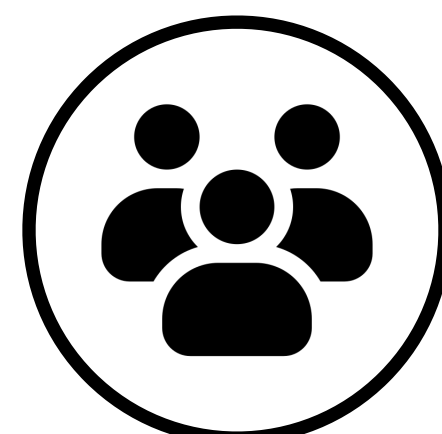
To promote enquiring minds and a spirit of curiosity enabling children to be motivated, flexible and adaptable life-long learners through a balanced and stimulating curriculum.

Curiosity



To instil a strong desire to know or learn something and be eager to learn with a confidence to ask for information. This will enable inquisitive thinking such as exploration investigation and problem solving.

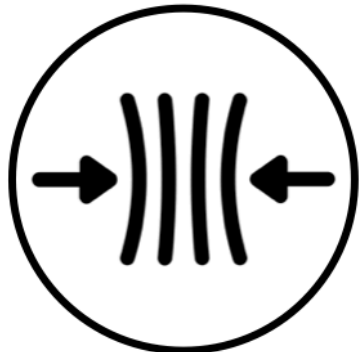
Community



To encourage our children to make a positive impact on our school, local and global community and to explore and reflect on their own values and faith in a supportive environment.

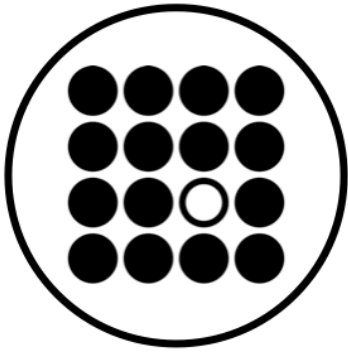
Curriculum Drivers

Resilience



To empower children to be able to withstand or recover quickly from difficult conditions and to challenge themselves to reach their full potential, spiritually, intellectually, physically, creatively and socially.

Independence



To enable children to take some responsibility for their own learning and become self-motivated to attain their goals without being overly reliant on others.

Curiosity



To instil a strong desire to know or learn something and be eager to learn with a confidence to ask for information. This will enable inquisitive thinking such as exploration investigation and problem solving.

Community



To encourage our children to make a positive impact on our school, local and global community and to explore and reflect on their own values and faith in a supportive environment.

Creativity



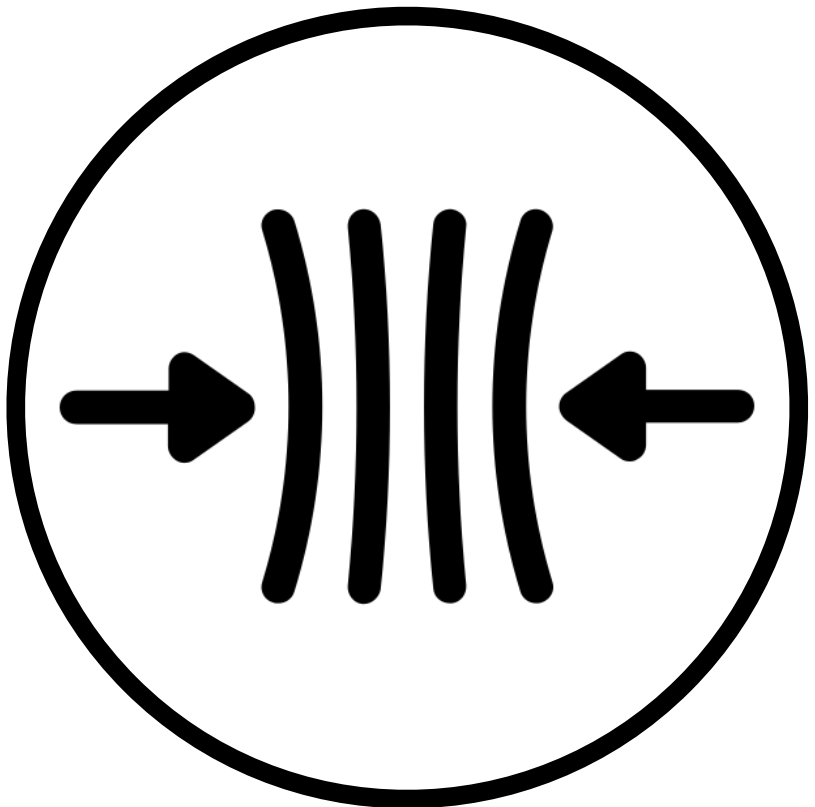
To promote enquiring minds and a spirit of curiosity enabling children to be motivated, flexible and adaptable life-long learners through a balanced and stimulating curriculum.



'We belong, we believe, we flourish'

Curriculum Drivers

Resilience



To empower children to be able to withstand or recover quickly from difficult conditions and to challenge themselves to reach their full potential, spiritually, intellectually, physically, creatively and socially.

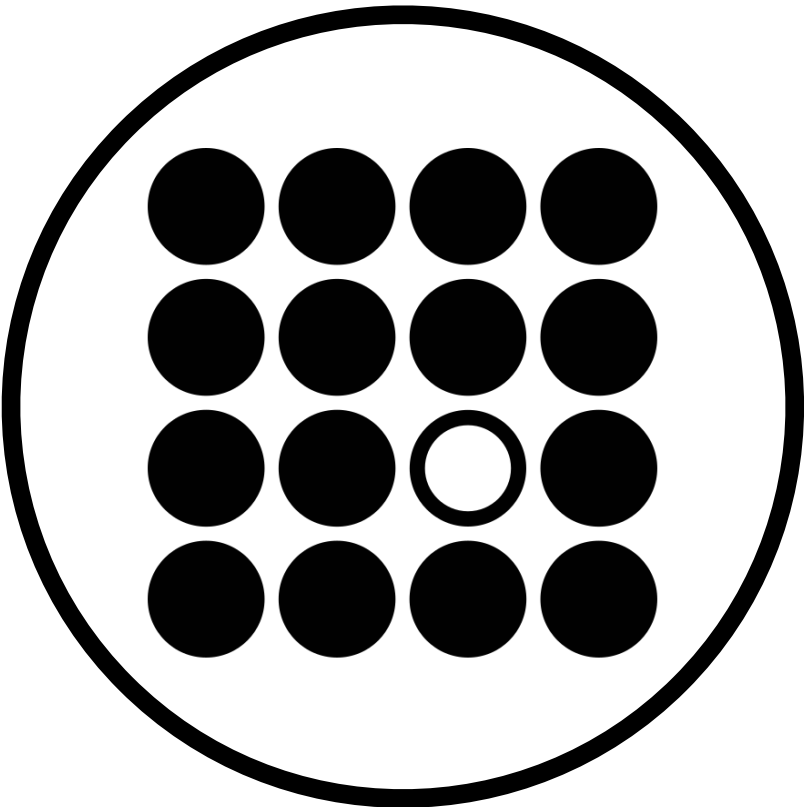


'We belong, we believe, we flourish'



Curriculum Drivers

Independence



To enable children to take some responsibility for their own learning and become self-motivated to attain their goals without being overly reliant on others.

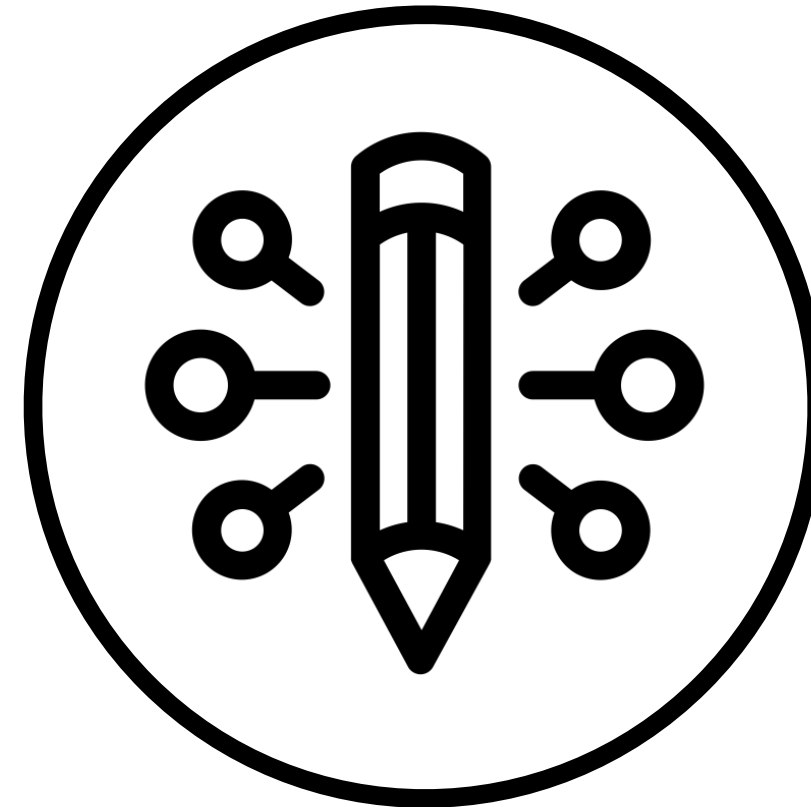


'We belong, we believe, we flourish'



Curriculum Drivers

Creativity



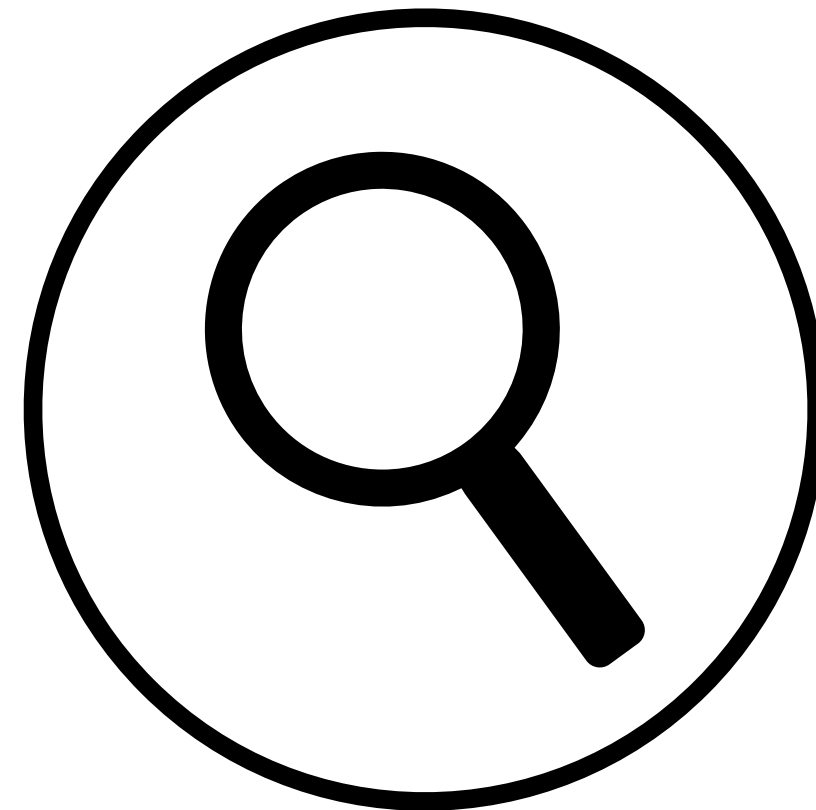
To promote enquiring minds and a spirit of curiosity enabling children to be motivated, flexible and adaptable life-long learners through a balanced and stimulating curriculum.

'We belong, we believe, we flourish'



Curriculum Drivers

Curiosity



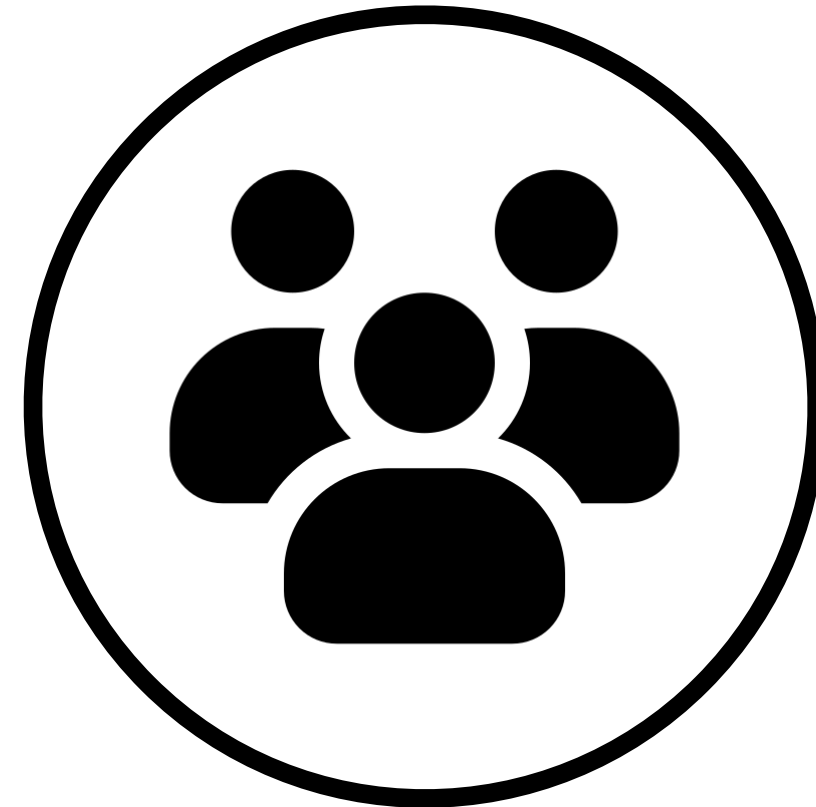
To instil a strong desire to know or learn something and be eager to learn with a confidence to ask for information. This will enable inquisitive thinking such as exploration investigation and problem solving.

'We belong, we believe, we flourish'



Curriculum Drivers

Community



To encourage our children to make a positive impact on our school, local and global community and to explore and reflect on their own values and faith in a supportive environment.

'We belong, we believe, we flourish'

